



METRIS[®] 250 Meter Parts List



This is a comprehensive catalog of the METRIS meter parts for Itron, Inc. It contains parts used in current production. **All parts information and descriptions in this document are believed to be accurate, but are not guaranteed. Some parts may not be backward compatible with older versions of the product type.** For information on part numbers, descriptions or assemblies in previous models of Sprague, Schlumberger or Actaris meters, contact Itron Support Services at 1-877-487-6602.

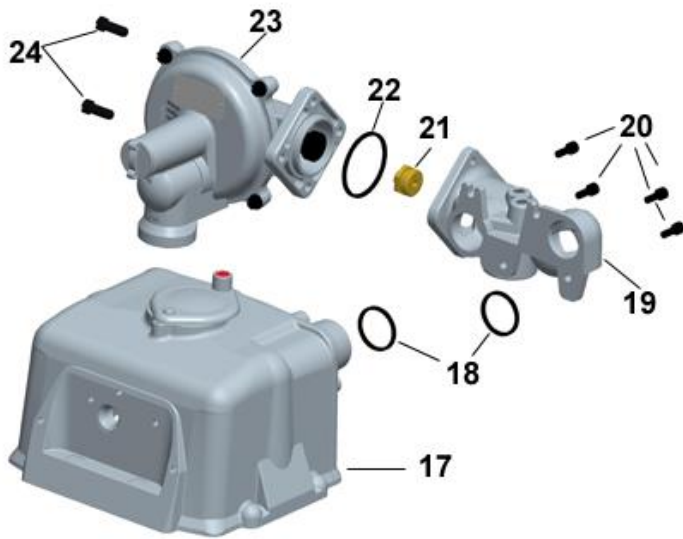
Parts list effective September 2016.

Contents

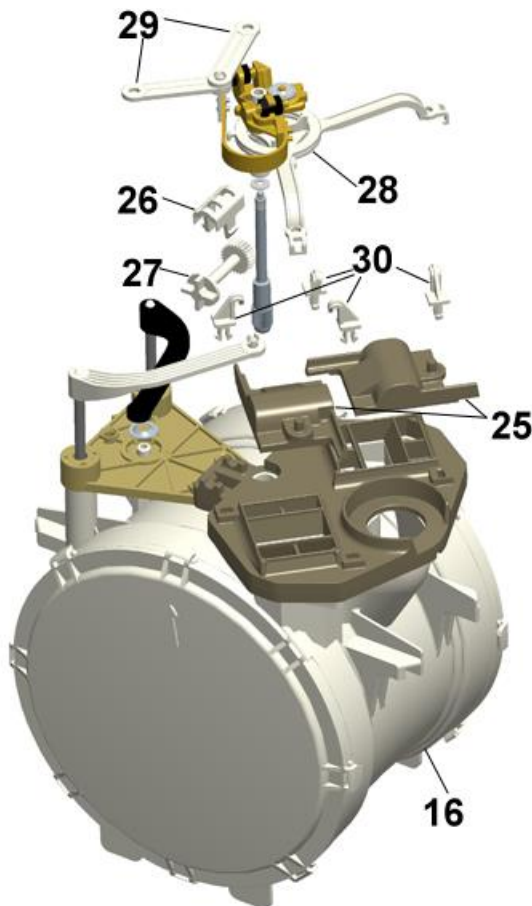
Special Tools.....	6
Meter Top Assembly 6"	7
Badge and Rivet.....	7
Meter Bottom Casting.....	7
Hand Hole Cover.....	7
Index Cover.....	7
O-Ring Hand Hole Cover.....	7
Case Gasket.....	7
Index	7
Outlet Seal.....	7
IDM Assembly	7
Drive Dog	8
Tangent Adjustment Assembly.....	8
Flag Arm Link	8
Security Seal Cup.....	8
Security Seal	8
Valve Cover Guide	8
Gear Shaft, Helical Worm.....	8
Valve Cover.....	8
Retaining Clip	8
Screws.....	8
Center Module.....	8
Meter Connections	9
10 LT Swivels	9
10 LT Connection Nut	9
10 LT Connection Nut Tin	9
10 LT Connection Nut Washer	9
#1 Sprague/1A Standard Swivels.....	9
#1 Sprague/1A Standard_Connection Nut	9
#1 Sprague/1A Standard Connection Nut Washer.....	9
#1 Sprague/1A Standard Connection Blind Washer.....	9
1-1/4" (1" Pittsburgh) Swivels	10
1-1/4" (1" Pittsburgh) Connection Nut.....	10
1-1/4" (1" Pittsburgh) Connection Nut Washer	10
20 LT Swivels	10
20 LT Connection Nut	10
20 LT Connection Nut Washer	10
20 LT Connection Nut Tin.....	10

30 LT Swivels 11
30 LT Connection Nut 11
30 LT Connection Nut Washer 11
30 LT Connection Nut Tin..... 11

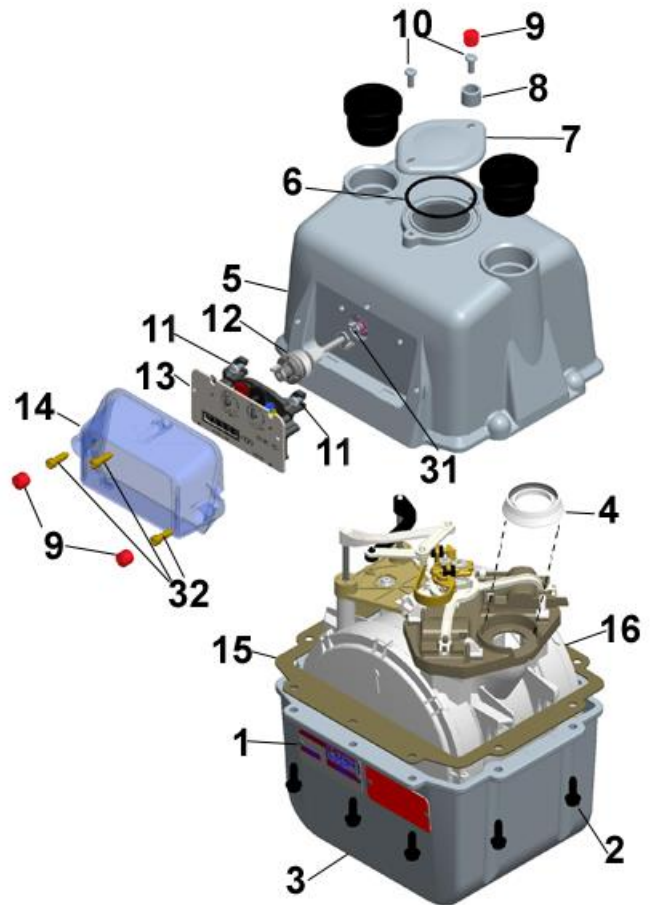
METRIS RM/MB



METRIS Measurement Module



METRIS 250



Item No.	Part No.	Quantity			Description	Item No.	Part No.	Quantity			Description						
		6"	RM	MB				6"	RM	MB							
1		1	1	1	Manufacturing badge:	16		1	1	1	Module assembly:						
	091055				019201-001		NTC ft ³										
	091056				091203-001		TC ft ³ (shown)										
	091414				091205-001		NTC m ³										
	091415				091206-001		NTC m ³ , reverse stop										
	091130				091207-001		TC m ³										
	091131				091208-001		NTC, ft ³ , reverse stop										
	017034				091343		Top case assembly RM/MB										
	091444	2	2	2	Rivet 1/8 x .254 (4 required if customer badge)	18	091421		2	2	Manifold seals						
2	755304	10	10	10	Case screw						RM manifold assembly includes manifold with inlet & outlet hub (regulator included with RM only):						
3	091334-001SU	1	1	1	Bottom case with badge holes			1	1	3/4" Inlet, #1 Sprague/1A Standard							
4	091054	1	1	1	Outlet seal		091221					3/4" Inlet, 10 LT					
5					Top case assembly, includes 6" center-to-center top, IDM assembly & hubs:	19						091371-002	091223			3/4" Inlet, 20 LT	
	091372-002				091225							1" Inlet, #1 Sprague/1A Standard					
	091373-002				091231							1" Inlet, 10 LT					
	091374-002				091232							1" Inlet, 20 LT					
	091375-002				091233							Manifold screws					
	091389-002				091103						4	4	1-1/4" (1" Pittsburgh)	21	Call Sales Order Analyst		1
6	091007	1	1	1	O-ring hand hole cover	23	Call Sales Order Analyst				MB plate/manifold regulator seal						
7	091006SU	1	1	1	Hand hole cover	24	755304-001		2	2	B42R regulator without valve body						
8	091061	1	1	1	Seal cup	25	091040	1	1	1	Retainer plate screws						
9	017167	2	2	2	Security seal (red)		091041	1	1	1	Valve cover (lapped), rear						
10	091096	2	2	2	Hand hole cover screws	26	091053	1	1	1	Valve cover (lapped), front						
11	010040-002	2	2	2	Index mounting screws	27					Retaining clip						
12	091460	1	1	1	IDM assembly		091135-001	1	1	1	Gear helical worm:						
13		1	1	1	Index:							091045-001				Metric, m ³	
	017312				Standard 4-circle dial/clock (ft ³) NTC												Cubic feet, ft ³
	017316				Standard 4-circle dial/clock (ft ³) TC												Tangent crank assembly:
	017321-001				Standard 5-digit direct read/odometer (ft ³) NTC												NTC ft ³
	017322-001				Standard , 4-digit direct read/odometer (ft ³) NTC												TC ft ³ (shown)
	017323-001				Standard 5-digit direct read/odometer (ft ³) TC												NTC m ³ , reverse stop
	017324-001				Standard 4-digit direct read/odometer (ft ³) TC												NTC m ³
	017325-001				Standard 5-digit direct read/odometer (m ³) NTC												TC m ³
	017326-001				Standard 5-digit direct read/odometer (m ³) TC												NATC ft ³ , reverse stop
	017289				2 PSI PC, 4-circledial/clock (ft ³)												Flag arm link
	017289-001				2 PSI compensating, 14.73 PSIA base, 4-circle, (ft3) NTC & TC												Valve cover guide
	800027-014				Standard 7-digit direct read (m ³) TC												Drive Dog
	800027-011				Standard 7-digit direct read (m ³) NTC												Index cover screw
14	016610	1	1	1	Index cover with RTV gasket												
15	091325	1	1	1	Case gasket												



Special Tools	
012700	METRIS proving wrench
012253	IDM Tool
80010930	Prover plug
091600-001	METRIS prover platform
799017	Orifice wrench
799051	Regulator adjustment wrench

Meter Top Assembly 6"



Assembly includes top casting, IDM, hubs

Exploded view item number 5

Part Number	Part Description
091371-002	#1 Sprague/1A Standard
091372-002	30 LT meter top assembly
091373-002	20 LT meter top assembly
091374-002	10 LT meter top assembly
091375-002	1-1/4" (1" Pittsburgh) meter top assembly
091343	RM top with IDM meter top assembly

Meter Bottom Casting



Exploded view item number 3

Part Number	Part Description
091334-001SU	Meter bottom casting with badge holes

Index Cover



Exploded view item number 14

Part Number	Part Description
016610	Index cover with boss and RTV (standard)
015619	Index cover with ports and RTV

Case Gasket



Exploded view item number 15

Part Number	Part Description
091325	Case gasket, cork/Neoprene

Outlet Seal



Exploded view item number 4

Part Number	Part Description
091054	Outlet seal

IDM Assembly



Exploded view item number 12

Part Number	Part Description
091460	IDM assembly for slant face

Badge and Rivet



Exploded view item number 1

Part Number	Part Description
091055	NTC 5# MAOP (ft ³)
091056	TC 5# MAOP (ft ³)
091414	NTC 10# MAOP (ft ³)
091415	TC 10# MAOP (ft ³)
091130	TC, 35 kPa (m ³)
091131	NTC, 35 kPa (m ³)
017034	Blank aluminum
017034EMB	Aluminum embossed
091444	Rivet 1/8 x 0.254

Hand Hole Cover



Exploded view item number 7

Part Number	Part Description
091006SU	Hand hole cover
091008-007	Hand hole cover, PFM, Pete's plug
091008-008	Hand hole cover, PFM, 1/8" pipe plug

O-Ring Hand Hole Cover



Exploded view item number 6

Part Number	Part Description
091007	O-Ring hand hole cover

Indexes



Exploded view item number 13

Part Number	Index Test Dials	Part Description	Type
017312	1/2', 2'	Standard 4-circle dial/clock (ft ³)	NTC
017316	1/2', 2'	Standard 4-circle dial/clock (ft ³)	TC
017321-001	1/2', 2'	Standard 5-digit direct read/odometer (ft ³)	NTC
017322-001	1/2', 2'	Standard 4-digit direct read/odometer (ft ³)	NTC
017323-001	1/2', 2'	Standard 5-digit direct read/odometer (ft ³)	TC
017324-001	1/2', 2'	Standard 4-digit direct read/odometer (ft ³)	TC
017325-001	1/2', 2'	Standard 5-digit direct read/odometer (m ³)	NTC
017326-001	*	Standard 5-digit direct read/odometer (m ³)	TC
017289	1/2', 2'	2 PSI compensating, 4-circle dial index (ft ³)	NTC & TC
017289-001	1/2', 2'	2 PSI compensating, 14.73 PSIA base, 4-circle, (ft ³)	NTC & TC
800027-014	*	Standard 7-digit direct read (m ³)	TC
800027-011	*	Standard 7-digit direct read (m ³)	NTC

*50dm³, 10dm³

Drive Dog



Exploded view item number 31

Part Number	Part Description
010530	Drive dog (male)

Security Seal Cup



Exploded view item number 8

Part Number	Part Description
091061	Security seal cup

Security Seal



*Exploded view item number 9 (017167)

Part Number	Part Description
017167	Snap seal (red) used in hand hole cover and index
017156	Snap seal (red) used in case

Gear Shaft, Helical Worm



Exploded view item number 27

Part Number	Part Description
091045-001	Helical worm
091135-001	Helical worm, metric

Retaining Clip



Exploded view item number 26

Part Number	Part Description
091053	Retaining clip

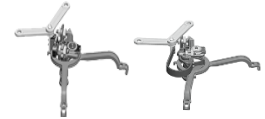
Center Module



Exploded view item number 16

Part Number	Part Description
091201-001	NTC ft ³
091203-001	TC ft ³
091205-001	NTC m ³
091206-001	NTC m ³ , reverse stop
091207-001	TC m ³
091208-001	NTC ft ³ , reverse stop

Tangent Adjustment Assembly



NTC

TC

Exploded view item number 28

Part Number	Part Description
091274	NTC ft ³
091275	TC ft ³
091276	NTC m ³ , reverse stop
091281	NTC m ³
091282	TC m ³
091286	NTC ft ³ , reverse stop

Flag Arm Link



Exploded view item number 29

Part Number	Part Description
091025	Flag arm link

Valve Cover Guide



Exploded view item number 30

Part Number	Part Description
091044	Valve cover guide

Valve Cover



Exploded view item number 25

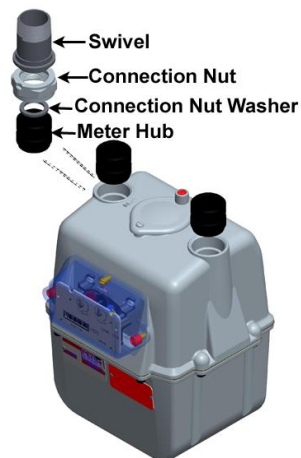
Part Number	Part Description
091040	Rear (lapped)
091041	Front (lapped)

Screws

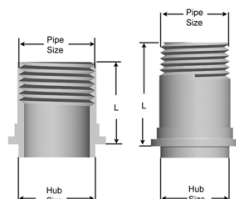
Exploded view item number 10, 2, 32, 11, and not shown.

Part Number	Part Description	Quantity	Location
091096	10-24 x 1/2 slotted pan head hand hole cover	2	Hand hole cover
755304-001	1/4-20 x 3/4 hex-head	10	Case
010625-002	10-24 x 5/8 cross-slotted	3	Index cover
010040-002	10-24 x 3/8 Fillister-head index mounting screw	2	Index to meter
010626-002	10-24 x .775 cross-slotted	2	Itron AMR devices

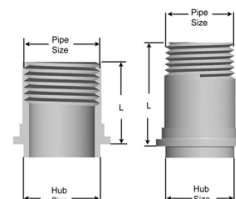
Meter Connections



10 LT Swivels



#1 Sprague/1A Standard Swivels



Part Number	Part Description
013322	10 LT x 3/4M galvanized swivel
013324	10 LT x 3/4M galvanized swivel with plug
013243	10 LT x 3/4M galvanized, insulated swivel

Part Number	Part Description
013110	#1 Sprague/1A Standard x 1M M.I.* black swivel
013132	#1 Sprague/1A Standard x 1M black swivel with plug
013247	#1 Sprague/1A Standard x 1M black, insulated swivel
013147	#1 Sprague/1A Standard x 1M black insulated swivel with plug
013111	#1 Sprague/1A Standard x 1M galvanized swivel
013129	#1 Sprague/1A Standard x 1M galvanized swivel with plug
013223	#1 Sprague/1A Standard x 1M galvanized, insulated swivel
013145	#1 Sprague/1A Standard x 1M galvanized, insulated swivel with plug
013107	#1 Sprague/1A Standard x 3/4F galvanized swivel
013205	#1 Sprague/1A Standard x 3/4F galvanized, insulated swivel
013215	#1 Sprague/1A Standard x 3/4M galvanized, insulated swivel
013114	#1/1A Standard x 3/4M M.I., * black swivel

*malleable iron

10 LT Connection Nut



Part Number	Part Description
013409	10 LT galvanized connection nut

10 LT Connection Nut Tin



Part Number	Part Description
010642	10 LT connection nut tin

10 LT Connection Nut Washer



Part Number	Part Description
015660	10 LT connection nut washer

#1 Sprague/1A Standard Connection Nut



Part Number	Part Description
010692	#1 Sprague/1A Standard black connection nut
013403	#1 Sprague/1A Standard galvanized connection nut

#1 Sprague/1A Standard Connection Nut Washer



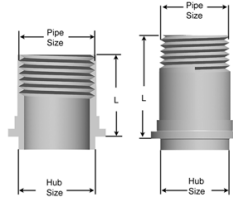
Part Number	Part Description
015650	#1 Sprague/1A Standard connection nut washer

#1 Sprague/1A Standard Connection Blind Washer



Part Number	Part Description
015648	#1 Sprague/1A Standard blind washer

1-1/4" (1" Pittsburgh) Swivels



(same as 1A swivels)

Part Number	Part Description
013110	#1 Sprague/1A Standard x 1M M.I.* black swivel
013132	#1 Sprague/1A Standard x 1M black swivel with plug
013247	#1 Sprague/1A Standard x 1M black, insulated swivel
013147	#1 Sprague/1A Standard x 1M black insulated swivel with plug
013111	#1 Sprague/1A Standard x 1M galvanized swivel
013129	#1 Sprague/1A Standard x 1M galvanized swivel with plug
013223	#1 Sprague/1A Standard x 1M galvanized, insulated swivel
013145	#1 Sprague/1A Standard x 1M galvanized, insulated swivel with plug
013107	#1 Sprague/1A Standard x 3/4F galvanized swivel
013205	#1 Sprague/1A Standard x 3/4F galvanized, insulated swivel
013215	#1 Sprague/1A Standard x 3/4M galvanized, insulated swivel

1-1/4" (1" Pittsburgh) Connection Nut



Part Number	Part Description
013412	1-1/4" black connection nut
013414	1-1/4" galvanized connection nut
013402	1-1/4" plated connection nut

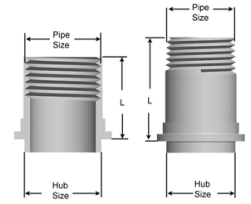
1-1/4" (1" Pittsburgh) Connection Nut Washer



(same as 1A connection nut washer)

Part Number	Part Description
015650	1-1/4" connection nut washer

20 LT Swivels



Part Number	Part Description
063095	20 LT x 1M black swivel
063092	20 LT x 1M black, insulated swivel
063096	20 LT x 1M galvanized swivel
063094	20 LT x 1M galvanized, insulated swivel
063091	20 LT x 1M galvanized swivel with plug
013216	20 LT x 3/4M galvanized swivel
013217	20 LT x 3/4M galvanized, insulated swivel
013241	20 LT x 3/4F galvanized swivel
013240	20 LT x 3/4F galvanized, insulated swivel
063095	20 LT x 1M black swivel

20 LT Connection Nut



Part Number	Part Description
063415	20 LT black connection nut
063417	20 LT galvanized connection nut

20 LT Connection Nut Washer



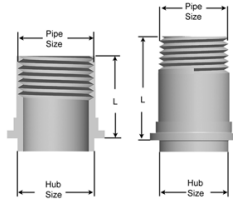
Part Number	Part Description
015664	20 LT connection nut washer

20 LT Connection Nut Tin



Part Number	Part Description
015640	20 LT connection nut tin

30 LT Swivels



Part Number	Part Description
013130	30 LT x 1-1/4 M black swivel
013225	30 LT x 1-1/4M black, insulated swivel
013131	30 LT x 1-1/4M galvanized swivel
013226	30 LT x 1-1/4M galvanized, insulated swivel
013136	30 LT x 1-1/4M galvanized swivel with plug

30 LT Connection Nut



Part Number	Part Description
013401	30 LT black connection nut
013405	30 LT galvanized connection nut

30 LT Connection Nut Washer



Part Number	Part Description
015657	30 LT connection nut washer

30 LT Connection Nut Tin



Part Number	Part Description
015643	30 LT connection nut tin

Itron is a registered trademark of Itron, Inc. © 2014-2016 Itron, Inc. All rights reserved
Contact • Itron, Inc., 313 North Highway 11, West Union, SC 29696
Toll free: 1-877-487-6602 26 September 2016